

## Turtle Love Cloth



*Copyright 2011 by Elaine Fitzpatrick. Permission is granted to make and sell items from this pattern provided that credit is given to me as the designer. Permission is **not** granted to reproduce the actual pattern, or post it, or distribute it, without my express permission. Please respect my copyright and play nice!*

**Size:** approximately 8" X 7 ½ ".

**Materials:** One skein of Peaches & Crème worsted weight cotton in a solid color.  
(Approximately 98 yards.)

**Needles:** U.S. Size 6/4.0mm or 5/3.75mm Because this is a “picture” cloth, you want your fabric to be fairly dense so the design will pop out. If you are a loose knitter, then you might want to drop down a needle size.

**Gauge:** 4.5 sts. per inch, not critical.

### **Abbreviations:**

k = knit

p = purl

sts. = stitches

**Pattern:** Cast on 37 sts.

Rows 1 – 7: (k1, p1) across row.

Row 8: (wrong side) (k1, p1) x8; k1; p3; k1; (p1, k1) x8.

Row 9: (k1, p1) x8; k5; (p1, k1) x8.

Row 10: (k1, p1) x7; (k1, p3) x2; k1; (p1, k1) x7.

Row 11: (k1, p1) x7; k3; p1; k1; p1; k3; (p1, k1) x7.

Row 12: (k1, p1) x6; k1; (p3, k1) x3; (p1, k1) x6.

Row 13: (k1, p1) x6; k3; p1; k5; p1; k3; (p1, k1) x6.

Row 14: (k1, p1) x5; k1; p3; k1; p7; k1; p3; k1; (p1, k1) x5.

Row 15: (k1, p1) x5; k3; p1; k9; p1; k3; (p1, k1) x5.

Row 16: (k1, p1) x4; k1; p3; k1; p11; k1; p3; k1; (p1, k1) x4.

Row 17: (k1, p1) x4; k3; p1; k13; p1; k3; (p1, k1) x4.

Row 18: (k1, p1) x3; k1; p3; k1; p15; k1; p3; k1; (p1, k1) x3.

Row 19: (k1, p1) x3; k3; p1; k17; p1; k3; (p1, k1) x3.

Row 20: (k1, p1) x2; k1; p3; k1; p19; k1; p3; k1; (p1, k1) x2.

Row 21: (k1, p1) x2; k3; p1; k21; p1; k3; (p1, k1) x2.

Row 22: k1; p1; k1; p3; k1; p5; k3; p7; k3; p5; k1; p3; k1; p1; k1.

Row 23: k1; (p1, k3, p1, k5) x3; p1; k3; p1; k1.

Row 24: (k1, p1) x2; k1; p6; (k1, p4) x3; k1; p5; k1; (p1, k1) x2.

Row 25: k1; p1; k12; p1; k9; p1; k10; p1; k1.

Row 26: (k1, p1) x2; k1; p8; k1; p2; k1; p6; k1; p2; k1; p5; k1; (p1, k1) x2.

Row 27: k1; p1; k33; p1; k1.

Row 28: (k1, p1) x2; k1; p8; k1; p2; k8; p2; k1; p5; k1; (p1, k1) x2.

Row 29: k1; p1; k7; p2; k2; p1; k6; p1; k2; p3; k9; p1; k1.

Row 30: (k1, p1) x2; k1; p5; k1; p3; k2; p8; k2; p2; k1; p3; k1; (p1, k1) x2.

Row 31: k1; p1; k5; p1; k18; p1; k8; p1; k1.

Row 32: (k1, p1) x2; (k1, p6) x2; k5; p6; k1; p2; k1; (p1, k1) x2.

Row 33: k1; p1; k4; p1; k1; p1; k4; p1; k5; p1; k4; p2; k9; p1; k1.

Row 34: (k1, p1) x2; k1; p5; k1; p2; k4; p7; k4; p2; k1; (p1, k1) x3.

Row 35: k1; p1; k10; p1; k7; p1; k14; p1; k1.

Row 36: (k1, p1) x2; k1; p5; k1; p2; k1; p3; k1; p5; k1; p3; k1; p4; k1; (p1, k1) x2.

Row 37: k1; p1; k8; p1; k2; p1; k5; p1; k2; p1; k4; p3; k5; p1; k1.

Row 38: (k1, p1) x3; k1; p11; k1; p3; k1; p9; k1; (p1, k1) x2.

Row 39: k1; p1; k8; p1; k4; p3; k4; p1; k12; p1; k1.

Row 40: (k1, p1) x3; k1; p6; k1; p1; k1; p2; k1; p3; k1; p2; k1; p6; k1; (p1, k1) x2.

Row 41: k1; p1; k10; p2; k5; p2; k14; p1; k1.

Row 42: (k1, p1) x3; k1; p3; (k1, p2) x2; (k1, p7) x2; k1; (p1, k1) x2.

Row 43: k1; p1; k11; p1; k5; p1; k9; p1; k5; p1; k1.

Row 44: (k1, p1) x2; k1; p3; (k1, p4) x2; k5; p9; k1; (p1, k1) x2.

Row 45: k1; p1; k22; p1; k3; p1; k6; p1; k1.

Row 46: (k1, p1) x2; k1; p4; k3; p20; k1; (p1, k1) x2.

Row 47: k1; p1; k3; p1; k25; p1; k3; p1; k1.

Row 48: k1; p1; k1; p3; (k1, p11) x2; k1; p3; k1; p1; k1.

Row 49: (k1, p1) x2; k3; p1; k9; p1; k1; p1; k9; p1; k3; (p1, k1) x2.

Row 50: (k1, p1) x2; (k1, p3, k1, p7) x2; k1; p3; k1; (p1, k1) x2.

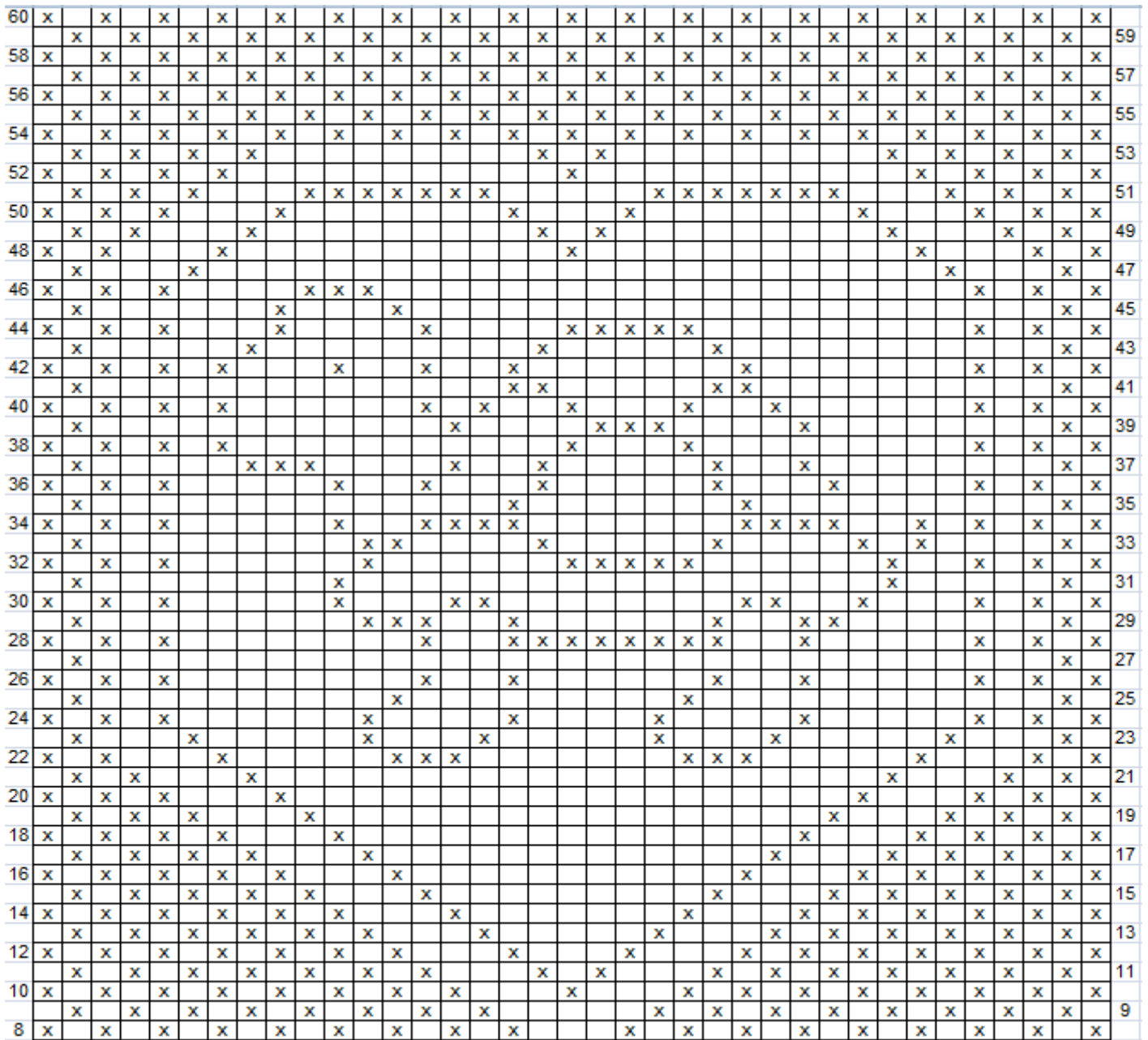
Row 51: (k1, p1) x3; k3; p7; k5; p7; k3; (p1, k1) x3.

Row 52: (k1, p1) x3; (k1, p11) x2; k1; (p1, k1) x3.

Row 53: (k1, p1) x4; k9; p1; k1; p1; k9; (p1, k1) x4.

Rows: 54 – 60: (k1, p1) across row.

Bind off in k1, p1 and weave in ends.



	Knit on odd numbered rows; purl on even numbered rows
<b>X</b>	Purl on odd numbered rows; knit on even numbered rows

Note: This chart shows only Rows 8 – 60. Please refer to written pattern for additional rows.