

Jelly Cloth



*Copyright 2019 by Elaine Fitzpatrick. Permission is granted to make and sell items from this pattern provided that credit is given to me as the designer. Permission is **not** granted to reproduce the actual pattern, or post it, or distribute it, without my express permission. Please respect my copyright and play nice!*

Size: approximately 9 X 8 ½"

Materials: One skein of worsted weight cotton in a solid color. The cloth pictured was done in Peaches & Crème in Peacock.

Needles: U.S. Size 6/4.0mm or 5/3.75mm Because this is a “picture” cloth, you want your fabric to be fairly dense so the design will pop out. If you are a loose knitter, then you might want to drop down a needle size.

Gauge: 4.5 sts. per inch, not critical.

Abbreviations:

k = knit

p = purl

sts. = stitches

Pattern: Cast on 39 stitches

Rows 1 - 7: knit.

Row 8: (wrong side) k3; (p3, k3) x6.

Row 9: k7; (p1, k5) x 4; p1; k7.

Row 10: k2; p35; k2.

Row 11: k3; (p3, k3) x6.

Row 12: K3; (p3, k1, p1, k1) x5; p3; k3.

Row 13: k7; (p1, k5) x 4; p1; k7.

Row 14: k2; p35; k2.

Row 15: k3; p3; k27; p3; k3.

Row 16: k3; p33; k3.

Row 17: k12; p2; k25.

Row 18: k2; p12; k2; p8; k1; p12; k2.

Row 19: k3; p3; k9; p1; k6; p1; k10; p3; k3.

Row 20: k3; p13; k1; p6; k1; p4; k1; p7; k3.

Row 21: k9; p1; k1; p1; k3; p1; k6; p1; k7; p1; k8.

Row 22: k2; p7; k2; (p5, k1) x2; p4; k1; p9; k2.

Row 23: k3; p3; k5; p1; k4; p1; k5; p1; k3; p2; k5; p3; k3.

Row 24: k3; p10; k1; p3; (k1, p4) x2; k1; p8; k3.

Row 25: k11; (p1, k4) x2; p1; k3; p1; k13.

Row 26: k2; p12; k1; p2; k1; (p4, k1) x2; p9; k2.

Row 27: k3; p3; k5; (p1, k4) x2; p1; k2; p1; k8; p3; k3.

Row 28: k3; p11; k1; p2; k1; p4; k1; p3; k1; p9; k3.

Row 29: k8; (p1, k3) x4; p1; k4; p2; k8.

Row 30: k2; p5; k1; p2; (k1, p3) x4; k1; p2; k1; p1; k1; p5; k2.

Row 31: k3; p3; (k3, p1) x2; k2; p1; k3; p1; k2; p1; k3; p1; k5; p3; k3.

Row 32: k3; p8; (k1, p3) x2; (k1, p2) x2; k1; p3; k1; p6; k3.

Row 33: k10; (p1, k2) x3; (p1, k3) x2; p1; k11.

Row 34: k2; p10; k2; (p2, k1) x5; p8; k2.

Row 35: k3; p3; k4; p1; k2; p1; k3; p1; k1; p1; k2; p1; k1; p1; k8; p3; k3.

Row 36: k3; p12; k6; p3; k1; p2; k1; p8; k3.

Row 37: k12; p1; k1; p4; k6; p2; k13.

Row 38: k2; p10; k1; p12; k1; p11; k2.

Row 39: k3; p3; k6; p1; k14; p1; k5; p3; k3.

Row 40: k3; p8; k1; p6; k3; p6; k1; p8; k3.

Row 41: k11; p1; k5; p1; k3; p1; k5; p1; k11.

Row 42: k2; p9; k1; p4; k1; p5; k1; p4; k1; p9; k2.

Row 43: k3; p3; k6; p1; k2; p1; k11; p1; k5; p3; k3.

Row 44: k3; p9; k1; p13; k1; p9; k3.

Row 45: k13; p1; k6; p1; k5; p1; k12.

Row 46: k2; p11; k1; p7; k1; p3; k1; p11; k2.

Row 47: k3; p3; k8; p1; k10; p1; k7; p3; k3.

Row 48: k3; p11; k1; p9; k1; p11; k3.

Row 49: k15; p1; k8; p1; k14.

Row 50: k2; p13; k1; p6; k1; p14; k2.

Row 51: k3; p3; k11; p6; k10; p3; k3.

Row 52: k3; p33; k3.

Row 53: knit.

Row 54: k2; p35; k2.

Row 55: k3; (p3, k3) x6.

Row 56: k3; (p3, k1, p1, k1) x5; p3; k3.

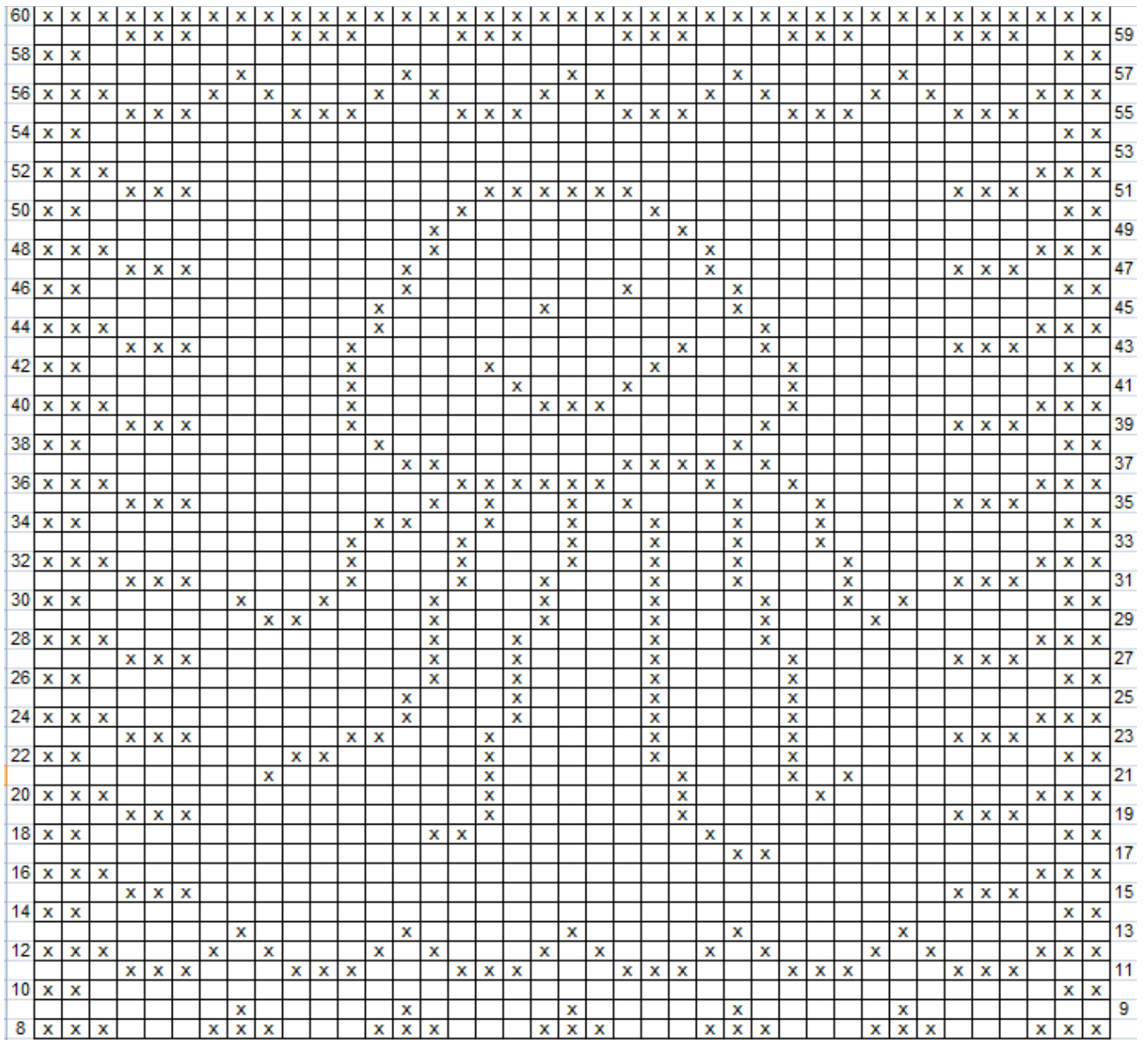
Row 57: k7; (p1, k5) x4; p1; k7.

Row 58: k2; p35; k2.

Row 59: k3; (p3, k3) x6.

Rows 60 – 66: knit.

Bind off purlwise and weave in ends.



Jellyfish Cloth

©Elaine Fitzpatrick

	Knit on odd numbered rows; purl on even numbered rows
X	Purl on odd numbered rows; knit on even numbered rows

Note: This chart shows only Rows 8 – 60. Please refer to written pattern for additional rows.